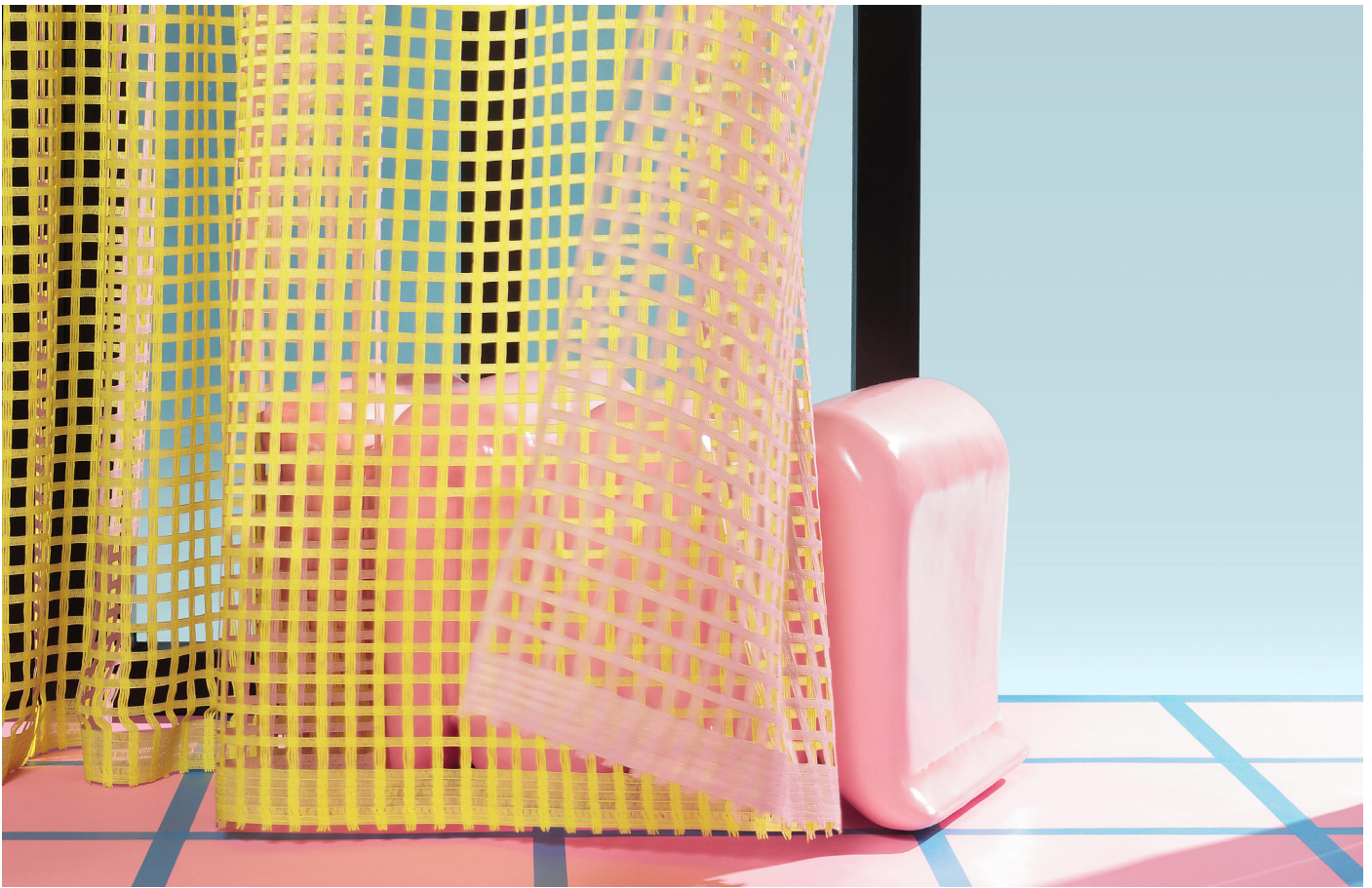


## HOMMAGE – A LOVE STORY BETWEEN PAST AND FUTURE: CRÉATION BAUMANN CELEBRATES THE DIALOGUE BETWEEN PAST AND PRESENT WITH 'HOMMAGE'



With its new collection, 'Hommage – A Love Story Between Past and Future,' Création Baumann combines its nearly 140-year heritage with a contemporary interpretation of design and craftsmanship. The collection is a tribute to the company's own archives and its distinctive design tradition – a reference to both its origins and its vision. It celebrates the precision craftsmanship, textile innovation and unmistakable aesthetic sensibility that have defined Création Baumann for generations. 'Hommage' thus opens up a visual spectrum ranging from expressive statements to understated elegance.

Inspired by the 1960s and 1970s, the collection combines nostalgic shapes and structures with a modern, clear design language. The elaborately designed fabrics revive the retro feel of that era in a modern form.

'Hommage' is thus an expression of creativity and independence, as well as an appreciation of the company's own history. At the same time, the collection is a commitment to the future. Designed for private homes, 'Hommage' showcases the company's core competence in creating textiles with the highest aesthetic appeal. It also stands out for its exceptional versatility in terms of colour, technology and, in particular, the different levels of transparency, which open up a wealth of combination and design possibilities. Some of the fabrics are flame-retardant and can therefore also be used in the demanding contract market.

## **A collection in motion – balancing tradition and innovation**

The collection comprises a total of eleven new fabrics and a cushion as an accessory. It impressively reflects the diversity of textile expression and introduces new fabric qualities that specifically develop and enrich the existing range. Semi-transparent crochet fabrics meet dense plain fabrics and expressive floral designs – together they tell a story of movement, materiality and timeless beauty. 'Hommage' combines craftsmanship with the lightness of modern design, bringing textile traditions into contact with contemporary innovation.

The floral and formal designs VIBE, JOY, PIERO and ORTELLA exude expressive energy, capturing the 'flower power' feeling of the 60s and 70s and reinterpreting it with contemporary lightness. Embroidery, elaborate burnout processes and graphically distorted floral motifs speak of creativity, courage and skilful precision. The fabrics appear lively and powerful – reminiscent of the archive and at the same time an expression of modern aesthetics. The ORTELLA fabric in particular stands for technical sophistication: the complex burnout process used here gives the fabric a unique materiality – despite the burnout, the wool look is retained. This creates an exciting interplay of intense colour presence, volume and textile warmth.

The GRIDA, PERLA and ONDA twisted weaves demonstrate Création Baumann's sense of structure, material presence and precision. The three fabrics were developed, woven and dyed entirely in-house. The linear, coarse-meshed structures of the semi-transparent surfaces create fascinating light effects – a play of proximity and distance, openness and structure.

The LIDO, RIVA and VIBE TWO fabrics also focus on character and depth. Dense, coarsely structured surfaces with subtle colour nuances create a sensual feel, while semi-transparent variants with mélange effects create a warm, cosy atmosphere.

The digitally printed crochet fabric VIBE TWO creates surprising light combinations thanks to its double-sided printing technique, combining technical innovation with textile poetry. The wide range of transparency levels opens up a variety of possible applications – from soft lighting moods to striking, expressive room designs.

With its new collection, Création Baumann is consistently developing its product line and setting new standards as an innovative textile specialist. 'Hommage' combines retro vibes and modern manufacturing technologies to create a collection that reinterprets tradition and the future in a unique balance. The collection thus becomes a lively interplay between the past and the present in a constant flow.

## ABOUT CRÉATION BAUMANN

The forward-looking Swiss family business Création Baumann designs, produces and sells innovative textile solutions for interior design. These are used as creative and functional long-lasting elements of interior design and meet the requirements of functionality and design as well as the protection of people and the environment. The brand's portfolio includes acoustic solutions, furnishing textiles such as curtain and upholstery fabrics, functional textiles and systems for interior shading.

A global leader in acoustic solutions for interior design, the brand has been driven by a pioneering spirit for almost 140 years, consistently delivering textile innovations. Challenges in architecture and interior design, a deep passion for design and interior decoration as well as a high level of technological competence are central to the development of innovative textile solutions by Création Baumann. The textile collections are characterized by timeless, clear design on the one hand and strong character and decorative designs on the other. In order to do justice to the protection of people and the environment, sustainability is a central component of the Création Baumann brand. With a significant share of production processes in Langenthal, the promotion of recycling processes at all stages and the uncompromising quality standard for the longevity of the high-quality textiles, Création Baumann reduces the environmental impact of the production of its textiles to a minimum.

[creationbaumann.com](https://creationbaumann.com)

## PRESS CONTACT DACH

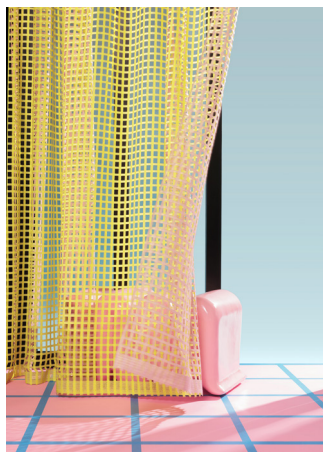
Brand. Kiosk  
Susanne Günther Neves / Sophia Sarbinowski  
[creation-baumann@brand-kiosk.com](mailto:creation-baumann@brand-kiosk.com)  
+49 (0)69 2691 5397



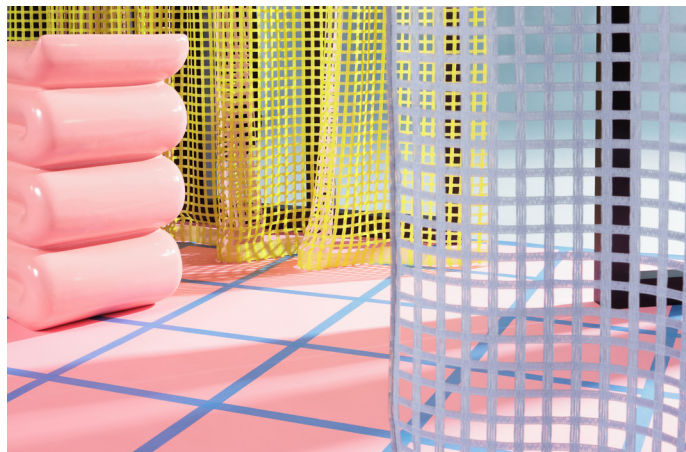
# SELECTION OF IMAGE MATERIALS

CRÉATION  
BAUMANN

To receive high-resolution images, please contact Brand. Kiosk via: [creation-baumann@brand-kiosk.com](mailto:creation-baumann@brand-kiosk.com)



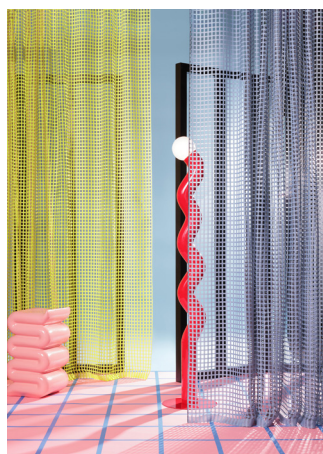
Hommage\_VIBE-TWO\_03.jpg



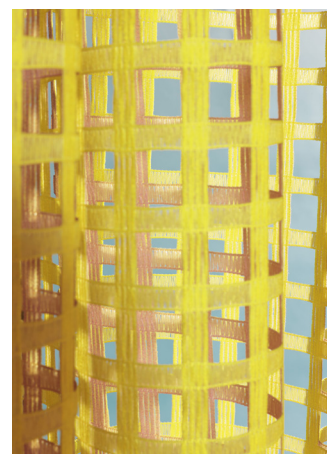
Hommage\_VIBE-TWO\_02.jpg



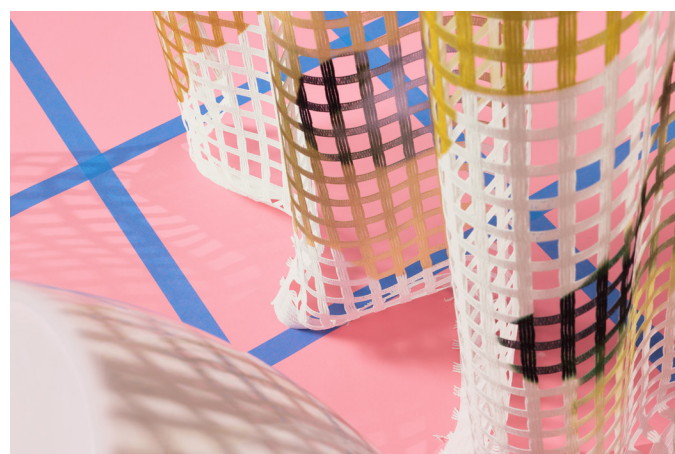
Hommage\_VIBE-TWO\_04.jpg



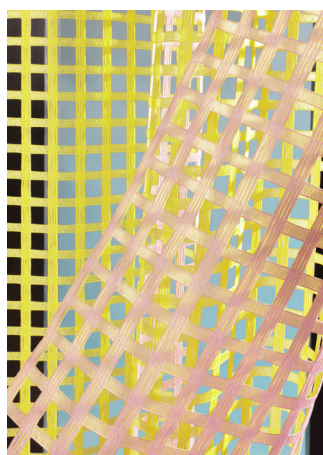
Hommage\_VIBE-TWO\_01.jpg



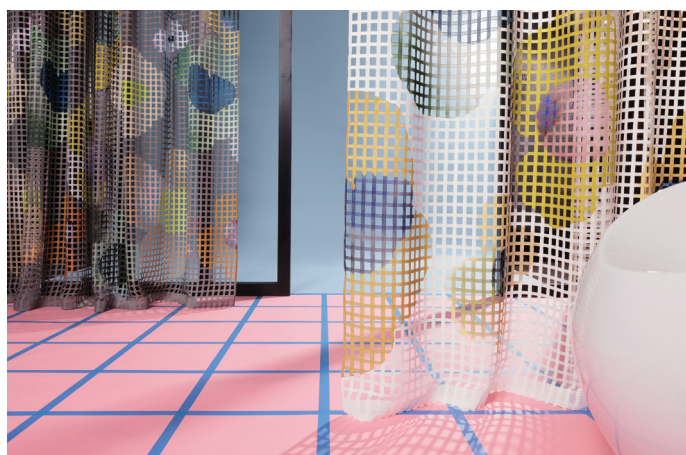
Hommage\_VIBE-TWO\_06.jpg



Hommage\_VIBE\_05.jpg



Hommage\_VIBE-TWO\_05.jpg



Hommage\_VIBE\_03.jpg



Hommage\_VIBE\_01.jpg



To receive high-resolution images, please contact Brand. Kiosk via: [creation-baumann@brand-kiosk.com](mailto:creation-baumann@brand-kiosk.com)



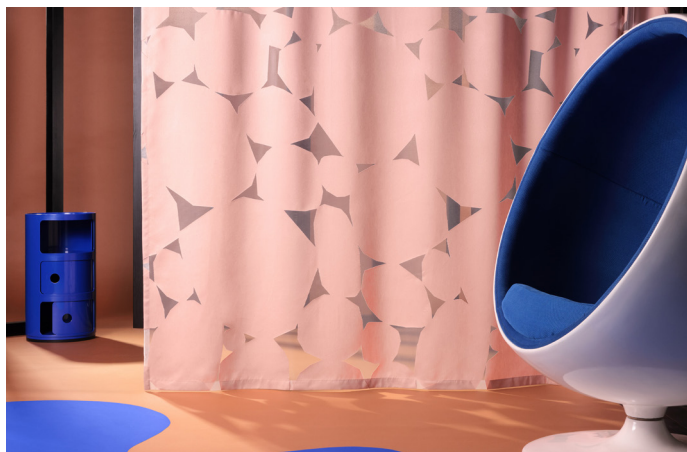
Hommage\_PIERO\_03.jpg



Hommage\_PIERO\_04.jpg



Hommage\_PIERO\_01.jpg



Hommage\_PIERO\_02.jpg



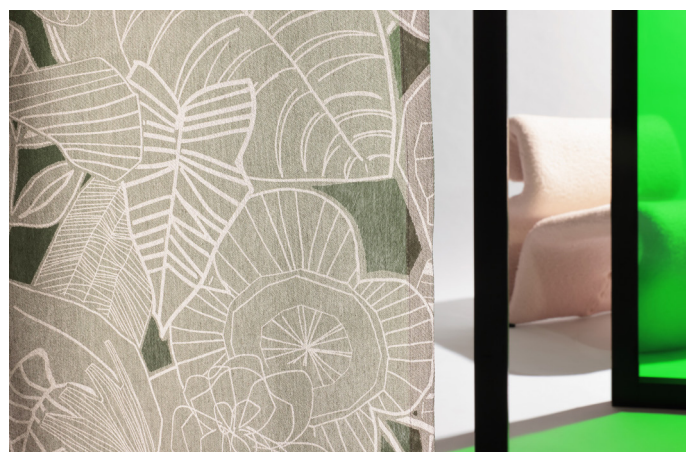
Hommage\_ORTELLA\_05.jpg



Hommage\_ORTELLA\_01.jpg



Hommage\_ORTELLA\_03.jpg



Hommage\_ORTELLA\_06.jpg



Hommage\_ORTELLA\_04.jpg



To receive high-resolution images, please contact Brand. Kiosk via: [creation-baumann@brand-kiosk.com](mailto:creation-baumann@brand-kiosk.com)



Hommage\_JOY\_02.jpg



Hommage\_JOY\_05.jpg



Hommage\_JOY\_03.jpg



Hommage\_JOY\_06.jpg



Hommage\_JOY\_04.jpg



Hommage\_JOY\_07.jpg



Hommage\_JOY-10.jpg



Hommage\_JOY\_08.jpg



Hommage\_JOY-09.jpg