

Office

Actelion Pharmaceuticals Ltd – Allschwil

An artificial building that convinces with a complex floor plan. It offers surprising insights and views. Textiles serve as room dividers and support the room acoustics.



Starting Point

The new building designed by architects Herzog & de Meuron for the Actelion bio-pharmaceutical company is a work of structural art, each level of which has a different floor plan. This complex building with its unconventional forms offers unexpected insights and outlooks.

Lounge-style communication zones have been set up at the places where the stacked beams cross each other.

Solution

Curtains are used for privacy and to prevent glare through the offices and glass separating walls.

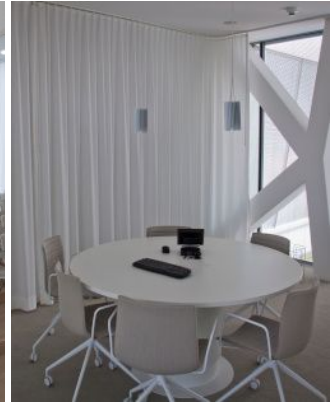
Curtains are used as room dividers, as shown here in the auditorium. The curtains are drawn round the auditorium, closing off the space, but still leaving emergency exits open.

Object

Actelion Pharmaceuticals Ltd, Allschwil,
Switzerland

Concept

Herzog & de Meuron, Basel



Textiles Used



SINFONIA CS VI WHITE

Article-Number: 0100301

Use: Transparent/semi-transparent curtain fabric

Number of colors: 3

Material: 100% Flame retardant (Trevira CS)

Fabric width: 300 cm/118 inch/3.28 yard

Weight: 74 g/m²

Sound absorption: α_w 0.10

Light fastness: 5-6



UMBRIA IV

Article-Number: 0004200

Use: Dense curtain fabric

Number of colors: 40

Material: 100% Flame retardant (Trevira CS)

Fabric width: 150 cm/59 inch/1.64 yard

Weight: 281 g/m²

Sound absorption: α_w 0.70

Abrasion resistance: 50'000 Martindale

Pilling: 4

Light fastness: see downloads