

Office

# CIC Tokyo

Organically and sound-absorbing designed workspaces for start-ups.



## Starting Point

The Cambridge Innovation Centre (CIC), which operates innovation centres in eight cities around the world, is establishing its first Asian location in Tokyo. This provides a range of start-ups with workspace, a community and services for business growth and global expansion.

The idea was to eliminate the industrial character of the premises as much as possible with the interior design and to create a creative working atmosphere.

## Solution

As a place for start-ups, the architects have taken inspiration from a natural system of CELLS and created a space in which the cells are organically interconnected. The individual cells are so-called private rooms, whereby they all differ in shape and size. Fabrics hanging from the ceilings serve as a connecting feature and also have a sound-absorbing effect.

The cells are connected by corridors, which are enriched with so-called ROJI CORNER, all of which can be used in different ways: as work areas, meeting and discussion zones or as places to relax. Curtains support the variable use of these corners.

## Object

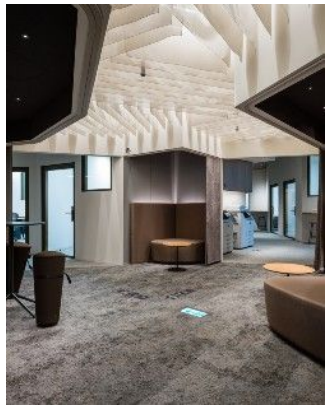
CIC Tokyo, Tokyo, Japan

## Concept

CIC + Tetsuo Kobori Architects, Tokyo, Japan

## Photos

Takahiro Arai / ©CIC & Tetsuo Kobori Architect



# Textiles Used

---



## SINFONIA CS VI R

**Article-Number:** 0170300

**Use:** Roller blinds

**Number of colors:** 13

**Material:** 100% Flame retardant (Trevira CS)

**Fabric width:** 275 cm/108 inch/3.01 yard

**max. width of the system:** 230 cm

**max. height of the system:** 300 cm

**Weight:** 74 g/m<sup>2</sup>

**Light fastness:** 5-6