

Office

The Paritätische Welfare Association Hamburg e.V.

Aesthetic symbiosis with optimal acoustics.



Starting point

The premises of the Paritätischen welfare association in Hamburg were redesigned by Gerdt Architektur with the support of smow. The existing office space on the ground floor was converted into an open space office. The requirements set included improving the acoustics (reverberation time) and dividing the space for different purposes. By using light colours and natural accents, a comfortable and homely working atmosphere was created.

Solution

Through the targeted integration of ceiling sails and ACOUSTIC WALL COVER as wall absorbers, an adequate acoustic design of the room was achieved, which has a positive effect on the reverberation time. The high-quality upholstery fabric CAVALLO PIU was used. For the curtains, the semi-transparent fabric SOLIO was chosen, which not only functions as a curtain material, but also serves as a room divider and privacy screen for the different zones. The integration of cushions with the cover fabric AREZZO IV harmoniously rounds off the entire concept.

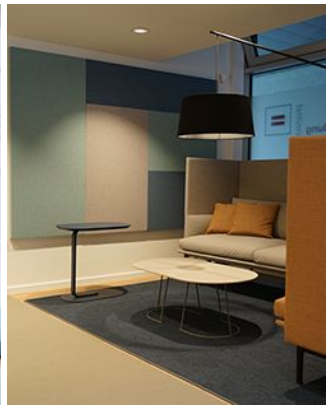
[ACOUSTIC WALL COVER](#)

Object

The Paritätische Hamburg e.V – Hamburg, Germany

Concept

Gerdt Architecture, Hamburg, Germany gerdt-architektur.de | smow Hamburg, Germany



Textiles Used



AREZZO IV

Article-Number: 0002695

Anwendung: Möbelstoff Objektbereich

Number of colors: 36

Material: 100% Polyester flammhemmend (Trevira CS)

Stoffbreite: 137 cm

Gewicht: 419 g/m²

Schallabsorption: α_w 0.45

Scheuerfestigkeit: 140'000 Martindale

Pilling: 4

Lichtechtheit: 6-7



SOLIO

Article-Number: 0101920

Anwendung: Vorhangstoff transparent/halbtransparent

Number of colors: 47

Material: 100% Polyester flammhemmend (Trevira CS)

Stoffbreite: 300 cm

Gewicht: 289 g/m²

Schallabsorption: α_w 0.20

Lichtechtheit: 6



CAVALLO PIU

Article-Number: 0100760

Anwendung: Möbelstoff Objektbereich

Number of colors: 55

Material: 80% Schurwolle / 20% Polyamid

Stoffbreite: 155 cm

Gewicht: 350 g/m²

Schallabsorption: α_w 0.75

Scheuerfestigkeit: 50'000 Martindale

Pilling: 3

Lichtechtheit: 5-6