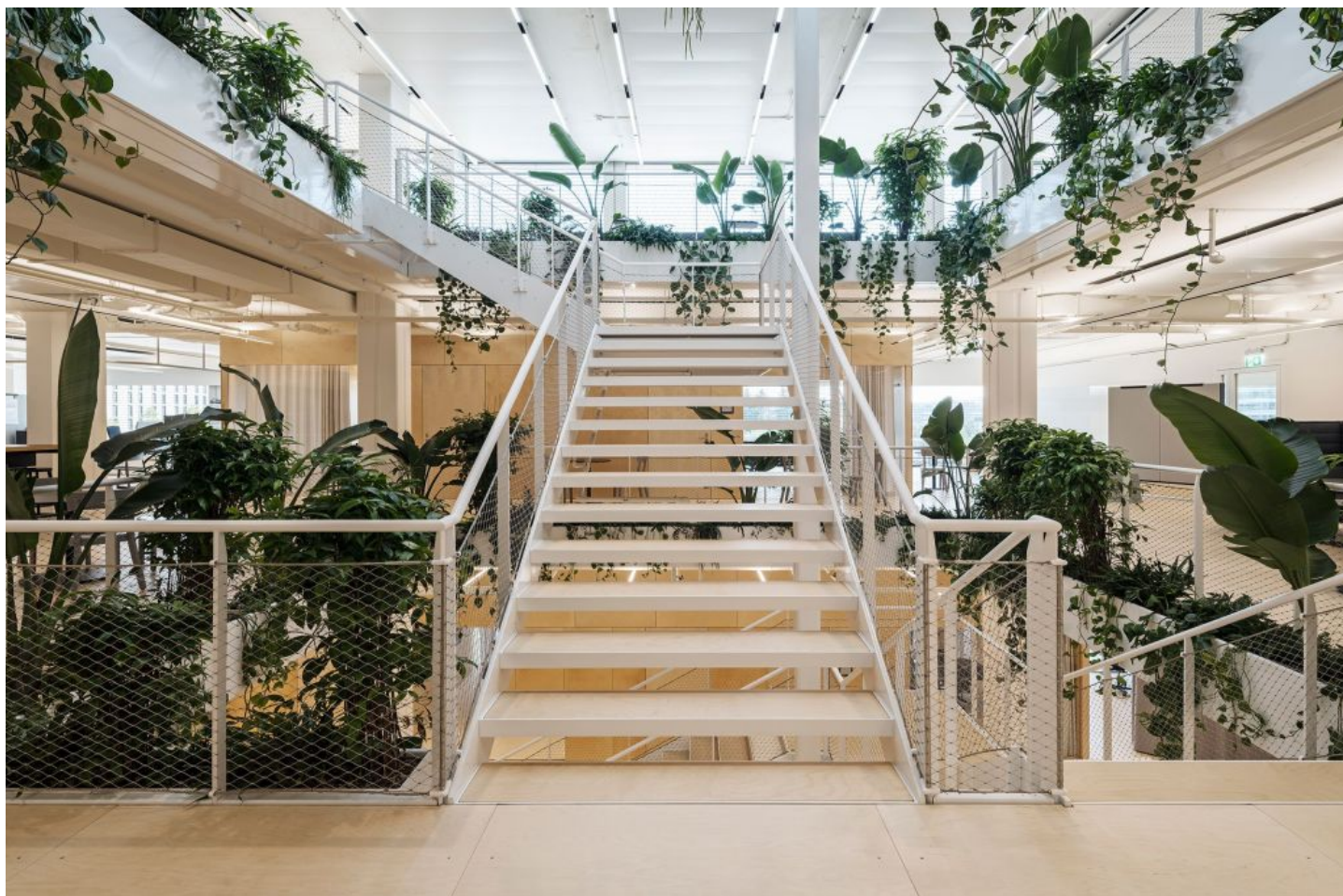


Office

Implenia Connect – Zurich

Textile versatility and inspiring flexibility: community and networking at work.



Starting point

Architect Stephan Hürlemann designed the new Implenia headquarters in 2020 to spatially reflect the company's cultural change. Various branches were brought together in the Ambassador House in Zurich Oerlikon, uniting 700 employees in a dynamic working environment.

Solution

The realisation of the new headquarters was a major step towards a modern and adaptable working environment. The result is an innovative working environment that offers space for individual needs and new perspectives. The FOCUS curtain fabric was used to create flexible work zones that provide space for concentrated work, communication and relaxation. The spaces are designed with movable elements and sustainable materials. A central staircase atrium, framed by plants, connects employees and manifests the name of the headquarters: «Implenia Connect».

Object

Implenia Connect, Zurich, Switzerland

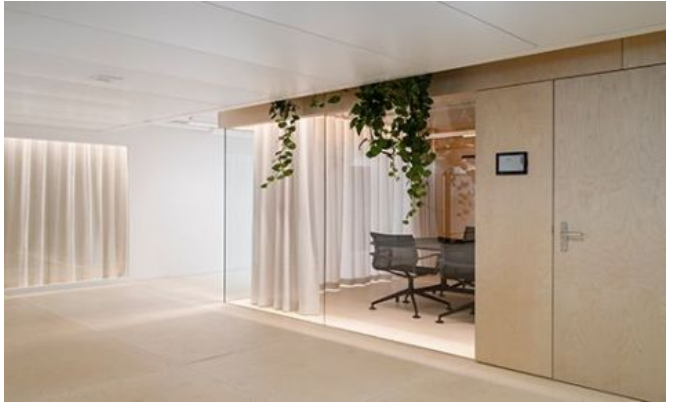
Concept

Hürlemann AG, Zürich, Switzerland

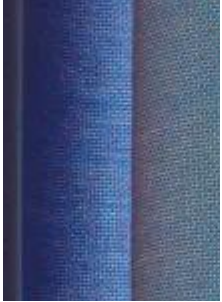
huerlemann.com

Photos

Beat Bühler Photography beatbuehler.ch



Textiles Used



FOCUS

Article-Number: 0101690

Use: Dense curtain fabric

Number of colors: 50

Material: 100% Flame retardant (Trevira CS)

Fabric width: 300 cm/118 inch/3.28 yard

Weight: 324 g/m²

Sound absorption: α_w 0.60

Light fastness: 5-6