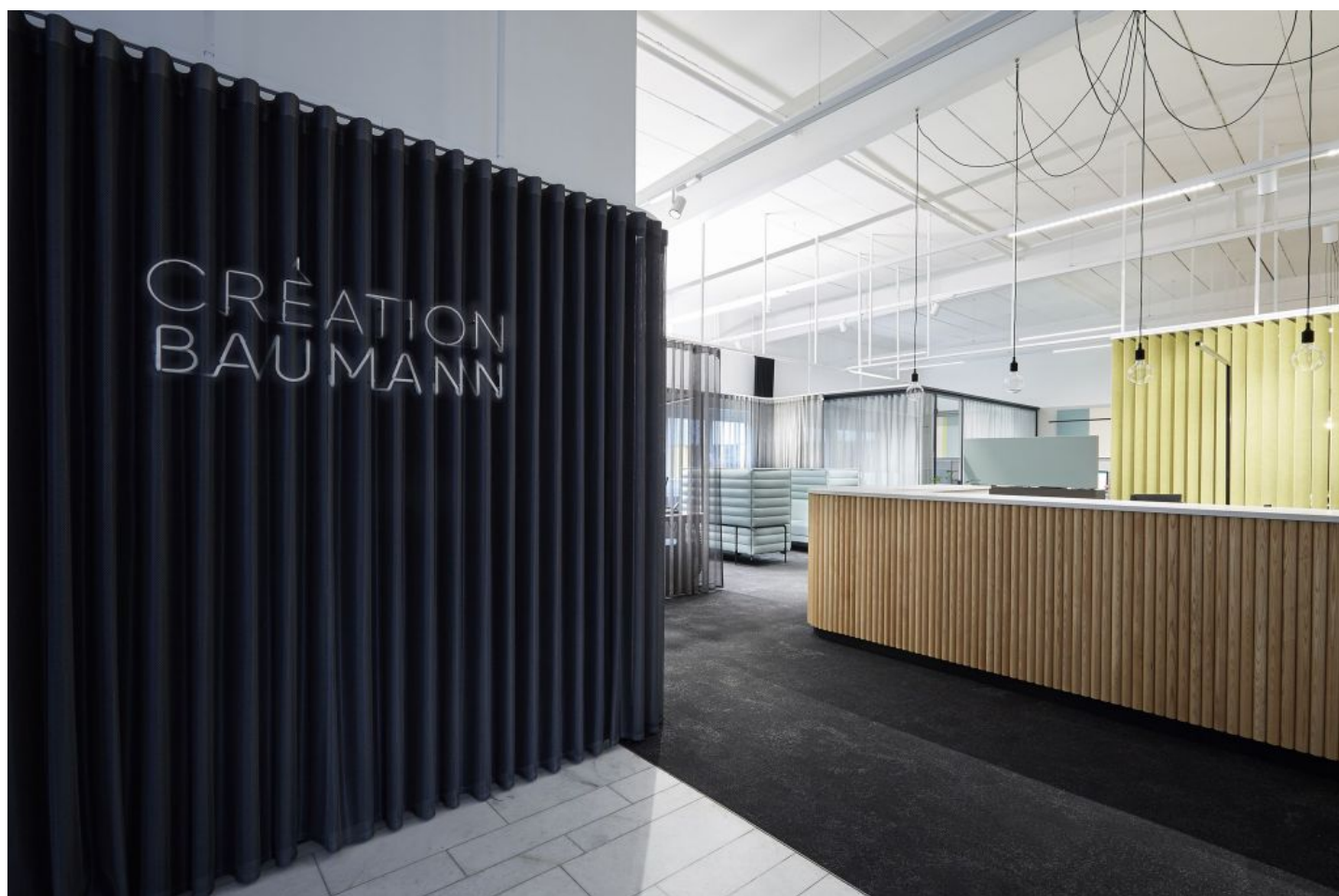


Office

# Office Dietzenbach

Best practice in our own office.



## Starting point

The Création Baumann subsidiary in Dietzenbach was remodelled to create an inspiring office environment that meets the needs of the employees. The aim was to create an environment that encourages collaboration while representing the brand and the variety of functional solutions.

## Solution

The office space was extensively remodelled, introducing an intelligent track system that allows the flexible use of different curtain qualities. Various acoustic fabrics such as PRINTACOUSTIC MOUNTAIN were used to optimise the room acoustics, while anti-glare and heat-insulating fabrics such as SHELTER were fitted to the windows.

Acoustic panels, ACOUSTIC WALL COVER and ACOUSTIC COLOR FIELDS with CAVALLO PIU were integrated to further improve the room acoustics.

Upholstery fabrics such as ARIK and AREZZO were also used to accentuate the colour of the room and achieve a harmonious design. In addition, the Quint-It glass cube with ALPHACOUSTIC was integrated to create a separate and quiet working atmosphere.

Acoustic solutions such as the ACOUSTIC STRIPES were implemented not only to enable a flexible room layout, but also to ensure targeted control of the room acoustics. The use of the ACOUSTIC DIVIDER VARIO with NoiseSilencer with LORD and UMBRIA also helps to create quiet zones in the rooms and thus increase the well-being of the employees.

[Acoustic solutions](#) [Textiles for glare and heat protection](#)

## Object

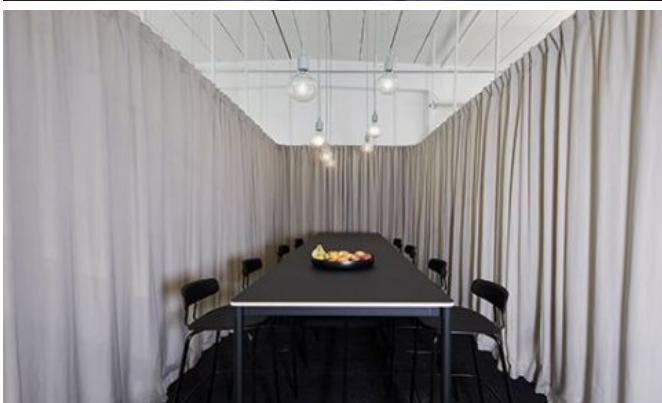
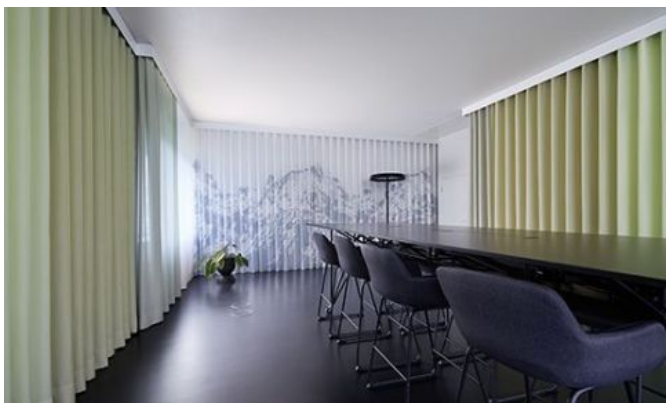
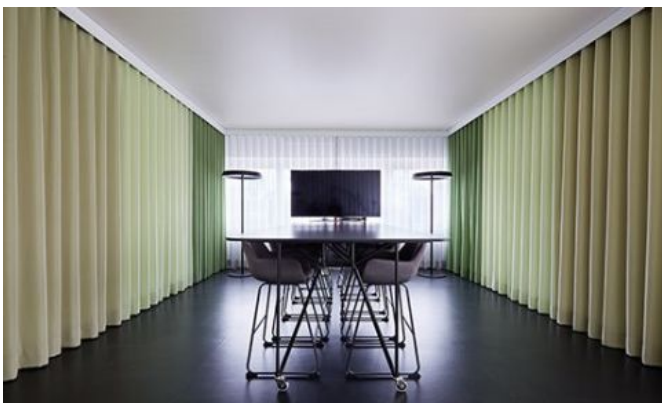
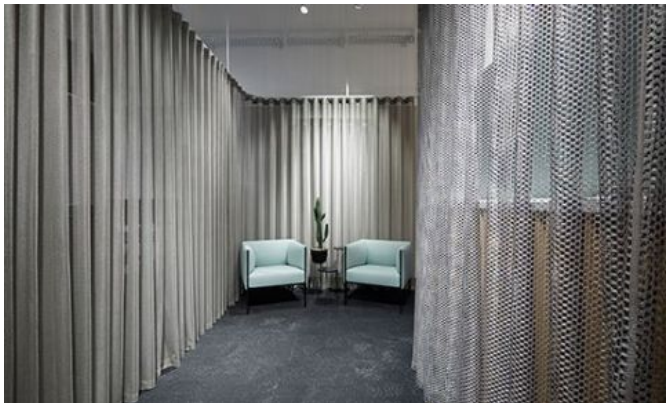
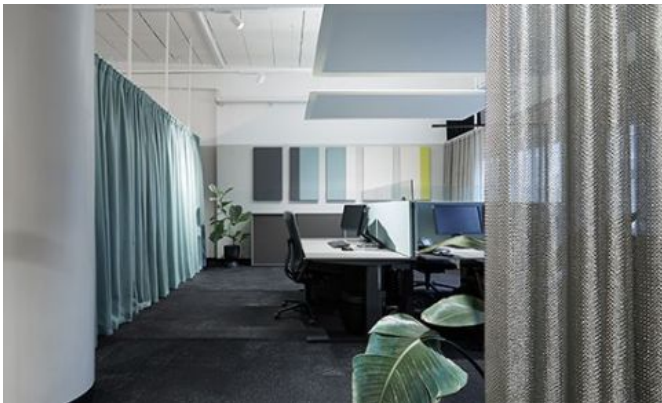
Office Dietzenbach – Création Baumann, Germany

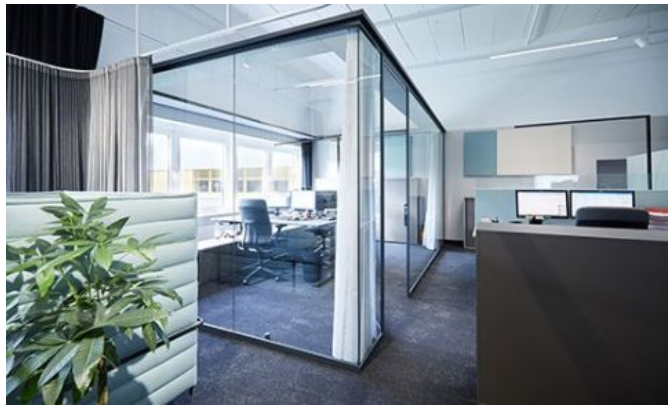
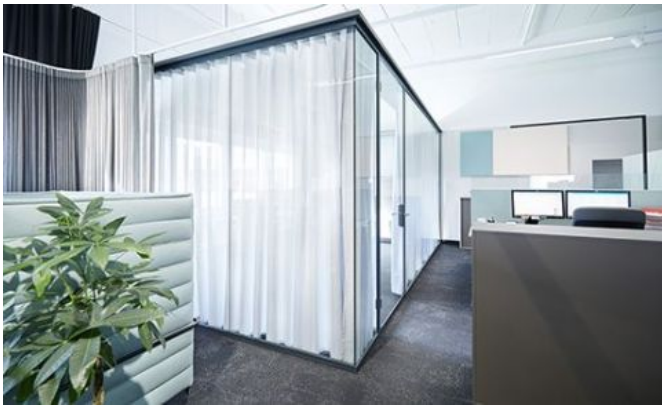
## Concept

Die Planstelle GmbH, Monika Berghammer, Eva Temper

## Photo

Roland Troll, Hermann Koepf





# Textiles Used

---



## ALU NET

**Article-Number:** 0101330

**Anwendung:** Vorhangstoff transparent/halbtransparent

**Number of colors:** 7

**Material:** 100% Polyester flammhemmend

**Stoffbreite:** 290 cm

**Gewicht:** 116 g/m<sup>2</sup>

**Lichtechtheit:** 7

---



## SHELTER

**Article-Number:** 0101155

**Anwendung:** Vorhangstoff transparent/halbtransparent

**Number of colors:** 17

**Material:** 100% Polyester flammhemmend

**Stoffbreite:** 300 cm

**Gewicht:** 246 g/m<sup>2</sup>

**Schallabsorption:**  $\alpha_w$  0.25

**Lichtechtheit:** siehe downloads

---



## SPARK

**Article-Number:** 0101745

**Anwendung:** Vorhangstoff transparent/halbtransparent

**Number of colors:** 3

**Material:** 100% Polyester flammhemmend (Trevira CS)

**Stoffbreite:** 290 cm

**Gewicht:** 150 g/m<sup>2</sup>

**Lichtechtheit:** 5

---



## ALPHACOUSTIC

**Article-Number:** 0100750

**Anwendung:** Vorhangstoff transparent/halbtransparent

**Number of colors:** 16

**Material:** 100% Polyester flammhemmend (Trevira CS)

**Stoffbreite:** 300 cm

**Gewicht:** 115 g/m<sup>2</sup>

**Schallabsorption:**  $\alpha_w$  0.60

**Lichtechtheit:** 6-7



## CAVALLO PIU

**Article-Number:** 0100760

**Anwendung:** Möbelstoff Objektbereich

**Number of colors:** 55

**Material:** 80% Schurwolle / 20% Polyamid

**Stoffbreite:** 155 cm

**Gewicht:** 350 g/m<sup>2</sup>

**Schallabsorption:**  $\alpha_w$  0.75

**Scheuerfestigkeit:** 50'000 Martindale

**Pilling:** 3

**Lichtechtheit:** 5-6

---



## ARIK

**Article-Number:** 0101525

**Anwendung:** Möbelstoff Objektbereich

**Number of colors:** 27

**Material:** 100% Polyester flammhemmend (Trevira CS)

**Stoffbreite:** 140 cm

**Gewicht:** 289 g/m<sup>2</sup>

**Schallabsorption:**  $\alpha_w$  0.80

**Scheuerfestigkeit:** 65'000 Martindale

**Pilling:** 4-5

**Lichtechtheit:** 5-6

---



## AREZZO IV

**Article-Number:** 0002695

**Anwendung:** Möbelstoff Objektbereich

**Number of colors:** 36

**Material:** 100% Polyester flammhemmend (Trevira CS)

**Stoffbreite:** 137 cm

**Gewicht:** 419 g/m<sup>2</sup>

**Schallabsorption:**  $\alpha_w$  0.45

**Scheuerfestigkeit:** 140'000 Martindale

**Pilling:** 4

**Lichtechtheit:** 6-7

---



## LORD IV

**Article-Number:** 0100130

**Anwendung:** Vorhangstoff dicht

**Number of colors:** 35

**Material:** 100% Polyester flammhemmend (Trevira CS)

**Stoffbreite:** 150 cm

**Gewicht:** 349 g/m<sup>2</sup>

**Schallabsorption:**  $\alpha_w$  0.70  
**Scheuerfestigkeit:** 60'000 Martindale  
**Pilling:** 4  
**Lichtechtheit:** 5-6

---



## SHADOW V -285

**Article-Number:** 0102005  
**Anwendung:** Vorhangstoff transparent/halbtransparent  
**Number of colors:** 7  
**Material:** 100% Polyester flammhemmend (Trevira CS)  
**Stoffbreite:** 285 cm  
**Gewicht:** 131 g/m<sup>2</sup>  
**Schallabsorption:**  $\alpha_w$  0.20  
**Lichtechtheit:** 5

---



## PRINTACOUSTIC MOUNTAIN

**Article-Number:** 0101620  
**Anwendung:** Vorhangstoff transparent/halbtransparent  
**Number of colors:** 2  
**Material:** 100% Polyester flammhemmend (Trevira CS)  
**Stoffbreite:** 300 cm  
**Gewicht:** 125 g/m<sup>2</sup>  
**Schallabsorption:**  $\alpha_w$  0.60  
**Lichtechtheit:** 5

---



## SOLIO

**Article-Number:** 0101920  
**Anwendung:** Vorhangstoff transparent/halbtransparent  
**Number of colors:** 47  
**Material:** 100% Polyester flammhemmend (Trevira CS)  
**Stoffbreite:** 300 cm  
**Gewicht:** 289 g/m<sup>2</sup>  
**Schallabsorption:**  $\alpha_w$  0.20  
**Lichtechtheit:** 6